



ROYAL ENFIELD

GUERRILLA 450





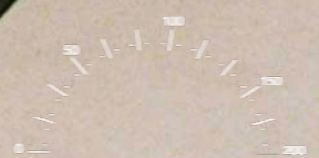
The Return of the Real Roadster

MODERN ROADSTERS LOOK GENERIC, SOUND SYNTHETIC AND FEEL PLASTIC. THE GUERRILLA 450 IS A DECLARATION OF INDEPENDENCE FROM THIS MIND-NUMBING CONFORMITY. IN AN AGE WHERE AUTOMATION HAS DULLED SENSATION, ALGORITHMS HAVE STIFLED IMAGINATIONS, AND FEATURE SETS HAVE REPLACED SOUL—THE GUERRILLA STANDS DEFIANTLY APART.



GRRR

THE GUERRILLA 450 MARKS A RETURN TO WHAT ROADSTERS WERE ALWAYS MEANT TO BE: KINETIC, INTUITIVE AND EAGER TO PLAY RIGHT ACROSS THE POWER BAND. STRIPPED OF ALL SUPERFLUITY, THIS MOTORCYCLE HAS BEEN PRECISELY ENGINEERED TO DELIVER PURE, PRIMAL FUN.



Looks good naked

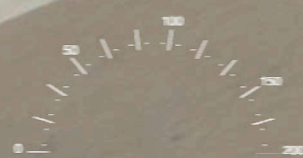
THE GUERRILLA 450 IS ALL ABOUT DESIGN WITHOUT DISTRACTIONS. NO FLASHY FRILLS. NO POINTLESS PLASTICS. IT HAS AN ATHLETIC BUILD WITH PERFECT ANGLES, PURPOSEFUL EDGES, AND MUSCLES IN ALL THE RIGHT PLACES. THIS IS A MACHINE THAT LOOKS AS GOOD AS IT RIDES.





The All-Roadster

THE GUERRILLA 450 HAS BEEN CALIBRATED BY RIDERS, NOT ROBOTS, FOR REAL WORLD RIDING. MADE FOR EVERY RIDER AT EVERY LEVEL OF RIDING EXPERIENCE, IT DELIVERS MAXIMUM SENSATION AND AGILITY, NO MATTER WHICH POWER BAND YOU ARE IN. AN UPRIGHT RIDING STANCE, APPROACHABLE SEAT HEIGHT AND ULTRA-RESPONSIVE CHASSIS MAKE THIS TARMAC BABY THE PERFECT MACHINE FOR EVERYDAY, ANY DAY RIDING—FROM TRAFFIC TO TWISTIES.

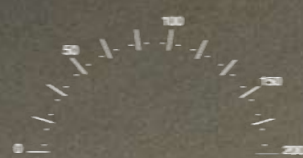




More growl for the growl

THE GUERRILLA 450 WASN'T DESIGNED FOR SPEC SHEETS OR RACETRACK FANTASIES. IT WAS MADE FOR ONE THING AND ONE THING ONLY: RIDING. THIS MOTORCYCLE IS TUNED WITH REAL MODES FOR REAL ROADS, FEATURING THE 452CC, LIQUID-COOLED SHERPA ENGINE THAT KEEPS YOU KINETIC ACROSS THE REV RANGE, NO MATTER WHAT GEAR YOU'RE IN.

C L H



E D F

ROYAL
ENFIELD

Sherrpa

FEATURING OUR 452CC LIQUID-COOLED SHERPA ENGINE, WITH 40PS AND 40NM OF TORQUE THAT ARE TUNED TO DELIVER ACROSS THE REV RANGE, THE GUERRILLA 450 IS ENGINEERED TO PACK POWER THAT WORKS FOR THE RIDER IN ANY AND EVERY SITUATION.

GUERRILLA 450

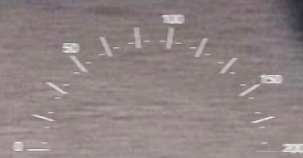
ROYAL
ENFIELD



Switch moods Switch modes

GO FROM PERFORMANCE MODE TO ECO MODE WITHIN SECONDS, COURTESY AN ULTRA-RESPONSIVE EMS SYSTEM, WHICH COMES WITH AN ADDED ADVANTAGE OF INCREASED FUEL ECONOMY.

C L H



E B F

Tripper TFT Cluster

NAVIGATE THE CITY STREETS ON YOUR TERMS. THE GUERRILLA 450'S TRIPPER TFT DISPLAY, WITH FULL-SCREEN GOOGLE MAPS INTEGRATION AND A 2.4/5 GHZ WIFI 5 CHIPSET, SEAMLESSLY CONNECTS TO YOUR DEVICES, LETTING YOU ACCESS YOUR MUSIC, MESSAGES, MAPS AND MORE, WITHOUT TAKING YOUR PHONE OUT OF YOUR POCKET.





Intuitive ergonomics

LOW SEAT HEIGHT. MID-SET FOOTPEGS. AND AN UPRIGHT RIDING STANCE. THE GUERRILLA 450'S ERGONOMICS ARE DESIGNED TO EVOLVE WITH YOUR RIDING STYLE AND ENABLE YOU TO HANDLE EVERYTHING, FROM TRAFFIC SNARLS TO TIGHT CORNERS.

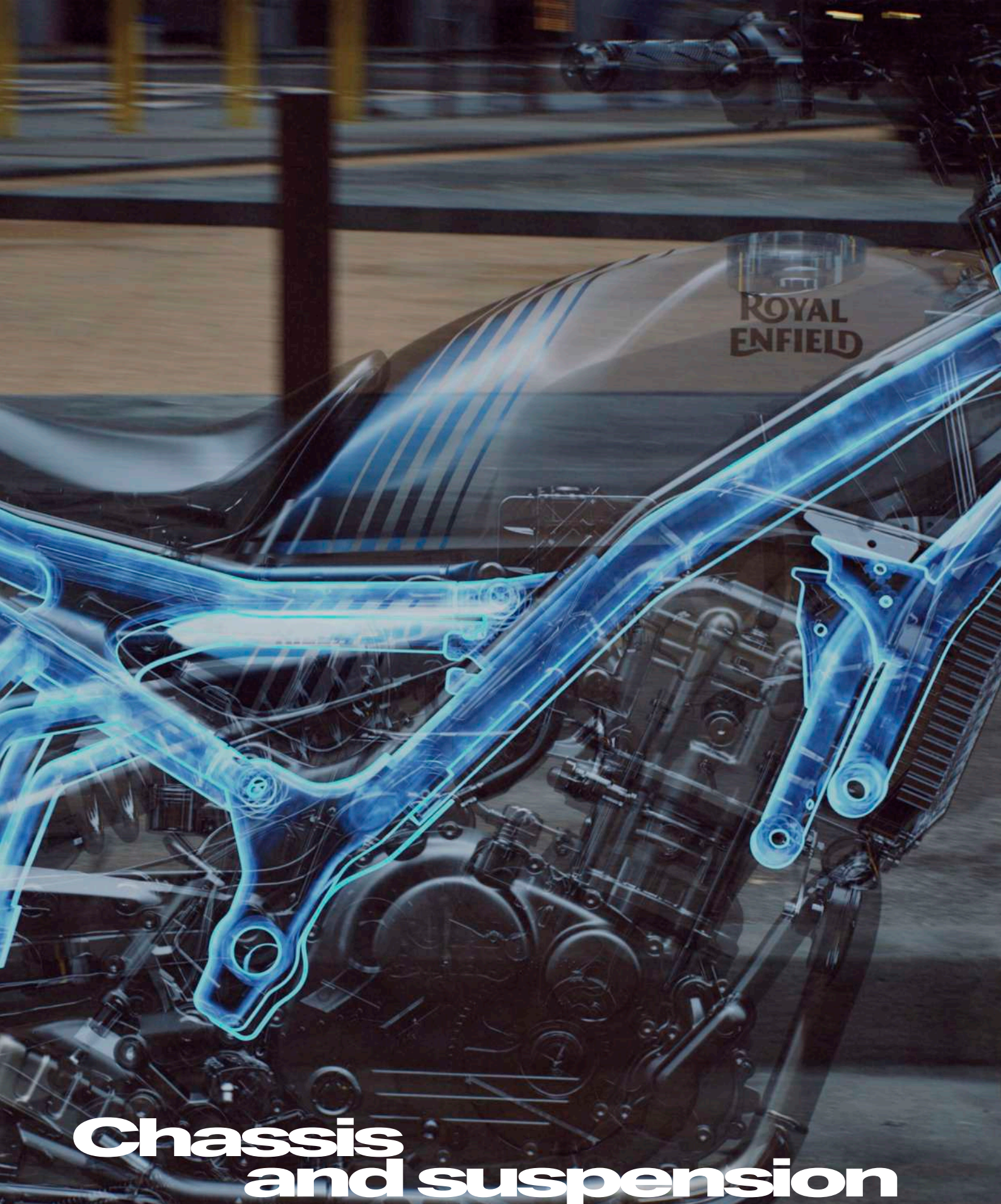


Wide profile tubeless tyres

THE GUERRILLA 450'S 17" INCH WHEELS, 120/70 FRONT & 160/60 REAR WIDE-PROFILE TUBELESS TYRES, AND BESPOKE TREAD PATTERN KEEP YOU IN CONTROL IN ALL SPEEDS AND SITUATIONS, WHILE ENSURING NO SURPRISES ON THE ROAD SPOIL THE FUN.

GRK
1901





ROYAL
ENFIELD

Chassis and suspension

WITH A BESPOKE TWIN DOWNTUBE SPINE FRAME, 43MM TELESCOPIC HYDRAULIC FRONT SUSPENSION AND 140MM LINKAGE TYPE MONOSHOCK REAR SUSPENSION BY SHOWA, THE GUERRILLA 450 IS HARDWIRED FOR HANDLING FROM THE HEART.



Colorways

FLASH



BRAVA BLUE



YELLOW RIBBON

DASH



GOLD DIP



PLAYA BLACK

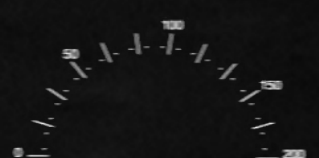
ANALOGUE



SMOKE



PLAYA BLACK



Specifications

ENGINE

TYPE	LIQUID COOLED, SINGLE CYLINDER, DOHC, 4 VALVES
BORE X STROKE (IN MM)	84 MM X 81.5 MM
DISPLACEMENT	452 CC
COMPRESSION RATIO	11.5:1
MAXIMUM POWER	29.44KW @ 8000 RPM
MAXIMUM TORQUE	40 NM @ 5500 RPM
IDLE RPM	1300
STARTING SYSTEM	ELECTRIC START
LUBRICATION	SEMI-DRY SUMP
ENGINE OIL GRADE	10W40 API SN, JASO MA2, SEMI SYNTHETIC
CLUTCH	WET MULTIPLATE, SLIP & ASSIST
GEARBOX	6 SPEED
FUEL INJECTION	ELECTRONIC FUEL INJECTION, 42MM THROTTLE BODY, RIDE BY WIRE SYSTEM

CHASSIS & SUSPENSION

TYPE	STEEL, TUBULAR FRAME USING ENGINE AS STRESSED MEMBER
FRONT SUSPENSION	TELESCOPIC FORKS, 43 MM
FRONT WHEEL TRAVEL	140 MM
REAR SUSPENSION	LINKAGE TYPE MONO-SHOCK
REAR WHEEL TRAVEL	150 MM

DIMENSIONS & WEIGHTS

WHEELBASE	1440 MM
GROUND CLEARANCE	169 MM
LENGTH	2145 MM (WITH NUMBER PLATE)
WIDTH	833 MM
HEIGHT	1125 MM (WITHOUT MIRRORS)
SEAT HEIGHT	780 MM
DRY WEIGHT	173 KG
KERB WEIGHT (90% FUEL + OIL)	184 KG
PAYLOAD W/ STANDARD EQUIPMENT	191 KG
FUEL CAPACITY	11 L

BRAKES & TYRES

TYRES FR.	120/70 R17
TYRES RR.	160/60 R17
BRAKES FRONT	HYDRAULIC DISC BRAKE, 310MM VENTILATED DISC, DOUBLE PISTON CALIPER
BRAKES REAR	HYDRAULIC DISC BRAKE 270MM VENTILATED DISC, SINGLE PISTON CALIPER
ABS	DUAL CHANNEL ABS

ELECTRICALS

ELECTRICAL SYSTEM	12V
BATTERY	12 V, 8 AH
HEAD LAMP	LED HEADLAMP
TAIL LAMP/TURN SIGNAL LAMP	INTEGRATED TURN & TAIL LAMP, ALL LED
OTHER EQUIPMENT	RIDE MODES, USB TYPE C CHARGING POINT
CLUSTER	4 INCH ROUND TFT DISPLAY WITH PHONE CONNECTIVITY, FULL MAP NAVIGATION (POWERED BY GOOGLE MAPS), MEDIA CONTROLS
CLUSTER (BASE MODEL)	DIGI-ANALOG INSTRUMENT CLUSTER WITH TRIPPER POD
FUEL CONSUMPTION	3.39 L/100KM
CO2	82.15 G/KM
PASS BY NOISE (DRIVE BY)	76 DB(A)
STATIONARY NOISE	91 DB(A) @4000RPM

All-roadster. All yours.

GET YOUR GUERRILLA 450 READY FOR ANYTHING AND EVERYTHING WITH AN EXCLUSIVE RANGE OF GENUINE MOTORCYCLING ACCESSORIES.





Right gear, right now.

BROWSE AN ALL-NEW COLLECTION OF MOTORCYCLING APPAREL INSPIRED BY THE GUERRILLA 450.



SUPERBILLA